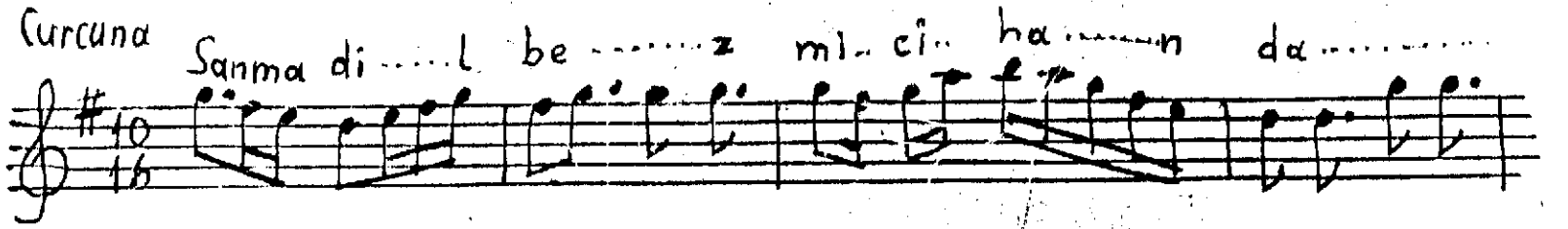
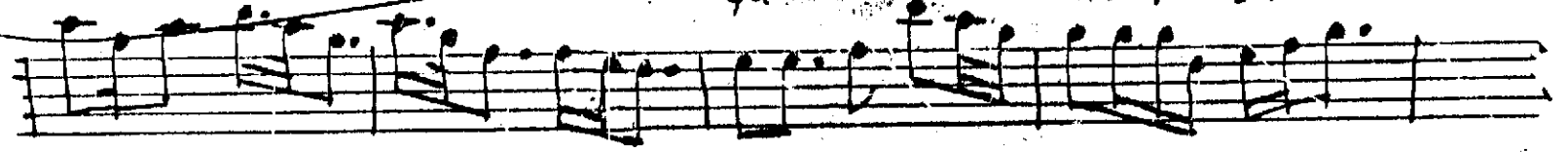


Sanma dil bezm-i cihanda bîkes-ü bîşaredir

Curcuna



bî...ke sü... bî... ça...re... di...r — SAZ —



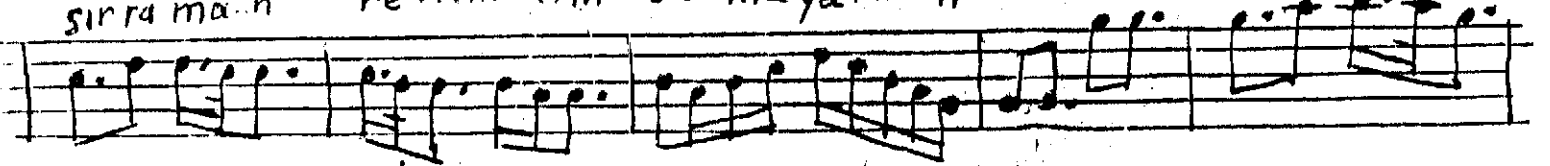
Ş...aş...ı k... se...r mestü di... ş...d



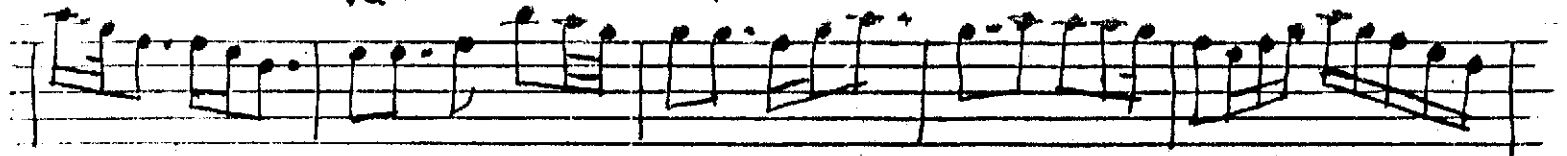
ey le ye...n pe...y ma...ne [di...r — SAZ — 1] [di...r — SAZ — 2]



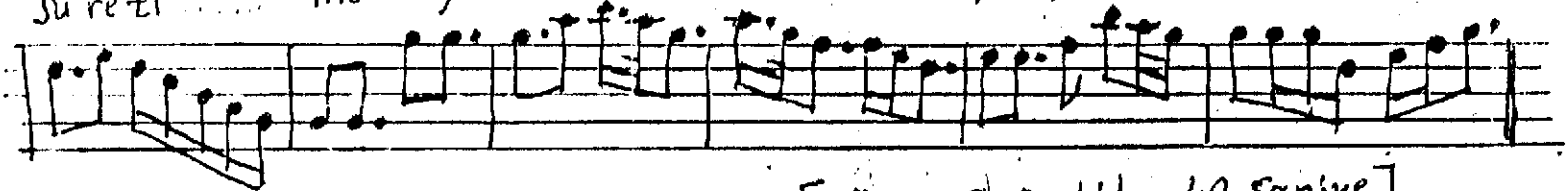
sırma mah... re...m ol maya...n he...r kimse bî...l



di... va...ne di...r — SAZ — eh...l...aş ka...



su re ti... me...y a te ş... se...y ya...le di...r — SAZ — 8



[Süre: 2 Dakika, 40 saniye]

Sanma dil bezm-i cihanda bîkes-ü bîşaredir
Aşıkı sermest-ü dilşâd eyleyen peymanedir
Sırma mahrem olmayan her kimse bil divanedir
Ehl-i aşka suret-i mey âteş-i seyyaledir
Aşıkı sermest-ü dilşâd eyleyen peymanedir.